

Model 57 Seta

Top with Crochet Flowers

Size Small

Materials – Seta from Austermann

100% Natural Mulbeery Silk superfine, each ball = approx 105 m / 50 g
400 g Color #04 marine

Materials – Algarve Color from Austermann

100% Mercerized Cotton, each ball = approx 142 m / 50 g
50 g Color #104 blau (blue)

Knitting needles one pair each sizes 3 and 3,5 mm (US 3 and 4), crochet hook size 3 mm (US D-3) from Schoeller + Stahl, cable needle (cn)

Take time to check gauge!

Note! Wash the gauge swatch once and then measure it.

The numbers in parentheses are the measurements before washing!

Pattern St: (Gauge: 21 sts and 37 rows = 10 x 10 cm/4 x 4" after washing)
Garter st (K every row) with size 3 mm (US 3) needles.

Eyelet pat: (Gauge: 20 sts and 27 rows = 10 x 10 cm/4 x 4" after washing)

With size 3,5 mm (US 4) needles, multiple of 7 sts + 1 selvage st each side. Work foll Chart. Only the RS rows are shown. Work the WS rows as P all sts, including the yo. Rep rows 1 – 6.

Cable pat (= 16 sts):

Row 1 – 4: Knit.

Row 7: 1 selvage st, **slip** 6 sts to cn and hold to front of work, K6, then K6 from cn, 1 selvage st.

Row 8: Purl.

Rows 9 - 12: Knit.

Rep rows 1 – 12.

Full-Fashioned Single (Double) Decs:

At RH side: 1 selvage st, K2, K2tog (K3tog), work in Pattern st to last 5 (6) sts, at LH side: K2tog tbl (K3tog tbl), K2, 1 selvage st.

Instructions:

Back:

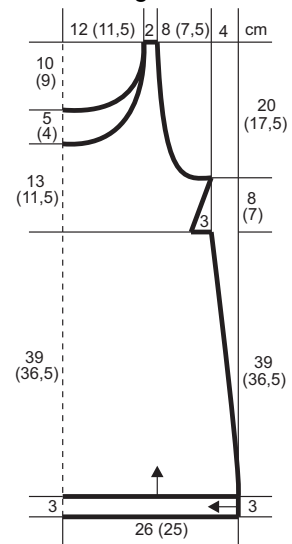
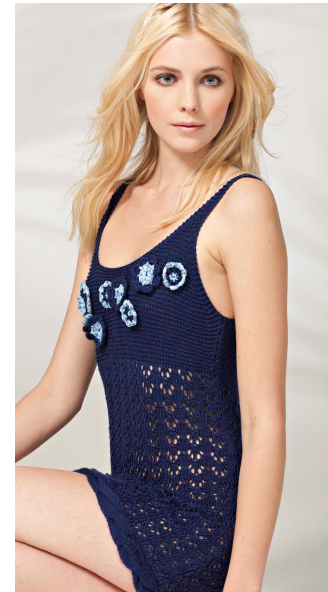
With Seta and size 3,5 mm (US 4) needles, cast on 107 sts and work in Eyelet pat, work 1st row as foll: 1 selvage st, beg with sts before rep, work rep 14 times, end with sts after rep, 1 selvage st.

For the side shaping, dec 1 st each side every 12th row 7 times. When piece measures 36,5 cm/14 1/2" from beg (= 102 rows) dec 11 sts evenly across last row = 82 sts.

Change to size 3 mm (US 3) needles and work in Pattern St. For the side shaping, inc 1 st each side every 6th row once and every 4th row 5 times = 94 sts.

After 7 cm/2 3/4" have been worked in Pattern St, for the armhole shaping, work full-fashioned double dec each side on next row, then every 2nd row 2 times more, then single dec every 2nd row 7 times, and every 4th row 4 times.

All samples, drawings and photographs are copyrighted. No part of this pattern may be copied or reproduced by any means without written permission of Schoeller Süssen GmbH.



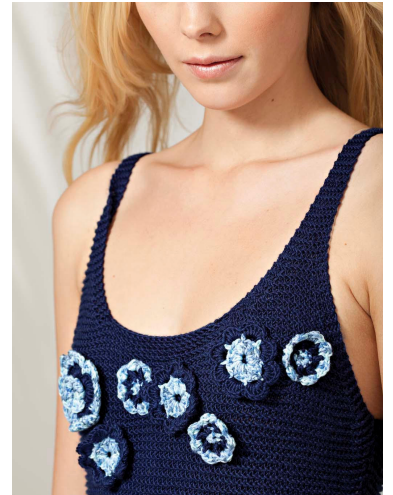
After 15,5 cm/6" have been worked in Pattern St, for the neck shaping, bind off center 20 sts, and working both sides at once, work full-fashioned double dec at each neck edge every 2nd row 3 times and single dec every 2nd row 4 times, then every 4th row 4 times. After 24,5 cm/9 1/2" has been worked in Pattern St, bind off rem 6 sts each side for shoulders.

Front:

Work same as Back, and after 11,5 cm/4 1/2" has been worked in Pattern St, for the neck shaping, bind off center 20 sts and working both sides at once, work full-fashioned double dec at each neck edge every 2nd 3 times, then single dec every 2nd row 4 times, every 4th row 2 times and every 6th row 2 times. After 24,5 cm/9 1/2" has been worked in Pattern St, bind off rem 6 sts each side for shoulders.

Finishing:

Sew shoulder and side seams. For the cable, with size 3,5 mm (US 4) needles and "Seta", cast on 16 sts and P 1 row. Then work sts as foll: 1 selvage st, 14 sts in St st 1 selvage st. Cont in Cable pat until piece measures 100 cm/39 1/2" from beg. Place sts on holder. Sew cable band along lower edge of Top, adjusting length of necessary. Sew ends of band tog. Make 1 large, 3 medium and 3 small flowers with size 3 mm (US D-3) crochet hook and sew to Front.



Small Flower:

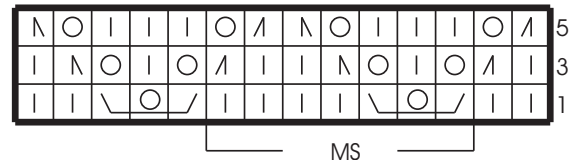
Ch 3 with "Algarve Color" join with slip st to first ch to form ring.
 Rnd 1 With "Algarve Color": 6 sc.
 Rnd 2 with "Seta": ch 3 counts as 1st dc, ch 2, * 1 dc, ch 2; rep from * 6 times more.
 Rnd 3 with "Algarve Color": in each ch-2 sp work 1 sc, 1 hdc, 1 dc, 1 hdc, 1 sc.

Medium Flower:

Ch 6 with "Algarve Color" join with slip st to first ch to form ring.
 Rnd 1 with "Algarve Color": 24 dc.
 Rnd 2 with "Algarve Color": * 1 sc, ch 3, skip 2 sts; rep from * 7 times more.
 Rnd 3 with "Seta": Work slip st to ch-3, * in ch-3 sp work 1 sc, 1 hdc, 3 dc, 1 hdc, 1 sc, ch 2; rep from * 7 times more.

Large Flower:

Ch 5 with "Algarve Color" and join with slip st to first ch to form ring.
 Rnd 1 with "Algarve Color": Ch 1, turn, * ch 3, 1 sc in Ring; rep from * 3 times more, join with slip st in 1st st.
 Rnd 2 with "Algarve Color": Ch 1, turn, * in ch-3 sp work 1 sc, 4 dc, 1 sc; rep from * 3 times. Join this and all rnds with slip st in 1st st.
 Rnd 3 with "Seta": Ch 2, working from behind, skip to the center dc, * work 1 sc between the dc and around the ch of Rnd 1, ch 5; rep from * 3 times.
 Rnd 4 with "Seta": Ch 1, turn, * in ch-5 sp work 1 sc, 8 dc and 1 sc; rep from * around.
 Rnd 5 with "Algarve Color": * Ch 4, work 1 sc, inserting hook between the 2 center dc and around the ch loop on Rnd 3, ch 4, 1 sc in sc on Rnd 3; rep from * around.
 Rnd 6 with "Algarve Color": In each ch-4 sp work 1 sc, 6 dc and 1 sc.



	= 1 knit st
○	= yo
/	= K2tog
↘	= SKP: Slip 1 st knitwise, K1, pass slipped st over K1
↘ ○ ↗	= Slip 1 st knitwise, K next st, yo, K1, pass the slipped st over
┌ MS ─┐	= repeat (rep)

All samples, drawings and photographs are copyrighted. No part of this pattern may be copied or reproduced by any means without written permission of Schoeller Süssen GmbH.